

BENCH PLANS FOR CAMP CHO-YEH  
 QUESTIONS? PLEASE CONTACT BILLM@CHO-YEH.ORG  
 PAGE 2

CONTENTS

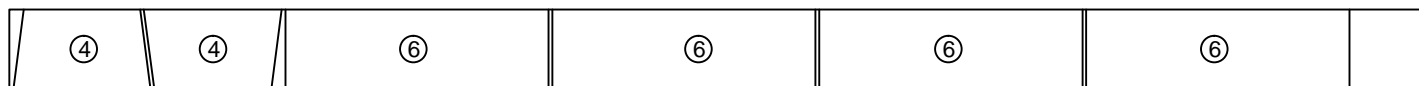
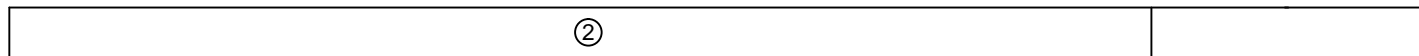
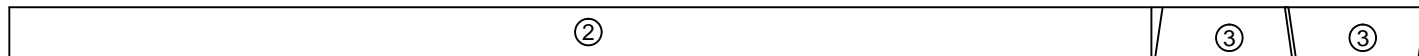
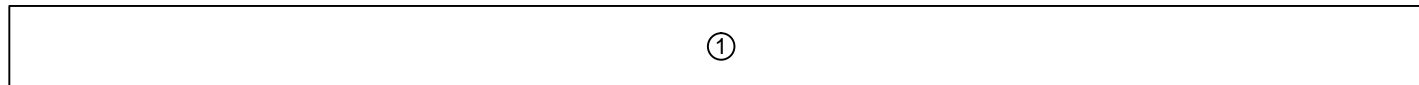
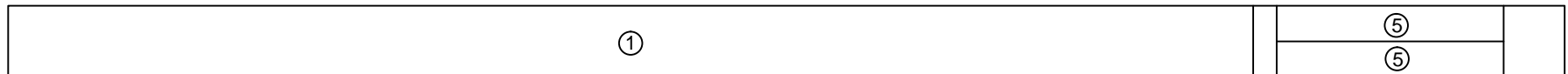
- PAGE 2 - PARTS LIST AND CUT DIAGRAM
- PAGE 3 - DETAILS FOR PIECES WITH ANGLED CUTS
- PAGE 4 - ASSEMBLY PAGE 1
- PAGE 5 - ASSEMBLY PAGE 2

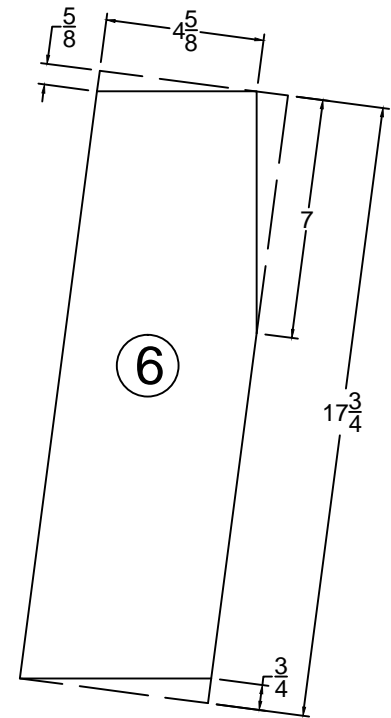
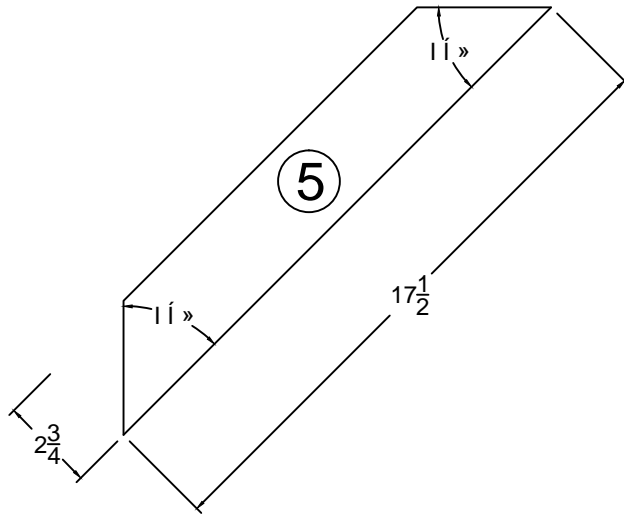
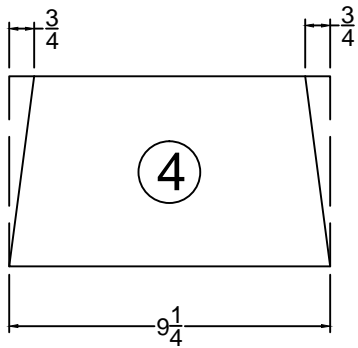
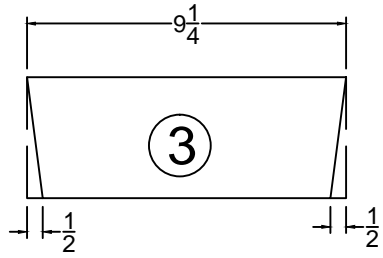
PURCHASE LIST FOR 1 BENCH

- (2) - 5/4 DECK BOARDS X 8' LONG, PRESSURE TREATED
- (1) - 5/4 DECK BOARDS X 10' LONG, PRESSURE TREATED
- (2) - 2X4X8' LONG, PRESSURE TREATED
- (1) - 2" EXTERIOR GRADE SCREWS, SMALL BOX
- (1) - 3" EXTERIOR GRADE SCREWS, SMALL BOX

MATERIAL LIST PER BENCH

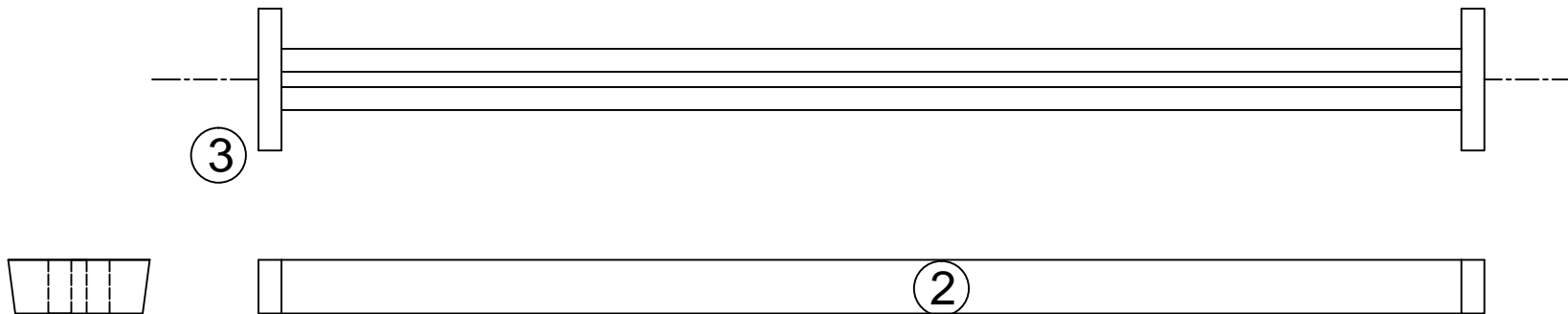
ITEM	#/BENCH	MATERIAL	DESCRIPTION
1	2	6"X5/4 P.T.	TOP BOARDS, 96" LONG
2	2	2X4 P.T.	TOP LENGTH SUPPORT, 77" LONG
3	2	2X4 P.T.	TOP LEG SUPPORTS, CUT AS SHOWN
4	2	6"X5/4 P.T.	BOTTOM LEG BRACKETS, CUT AS SHOWN
5	2	6"X5/4 P.T.	LEG DIAGONALS, RIP BOARD ON CENTER, THEN CUT AS SHOWN
6	4	6"X5/4 P.T.	LEGS, CUT AS SHOWN





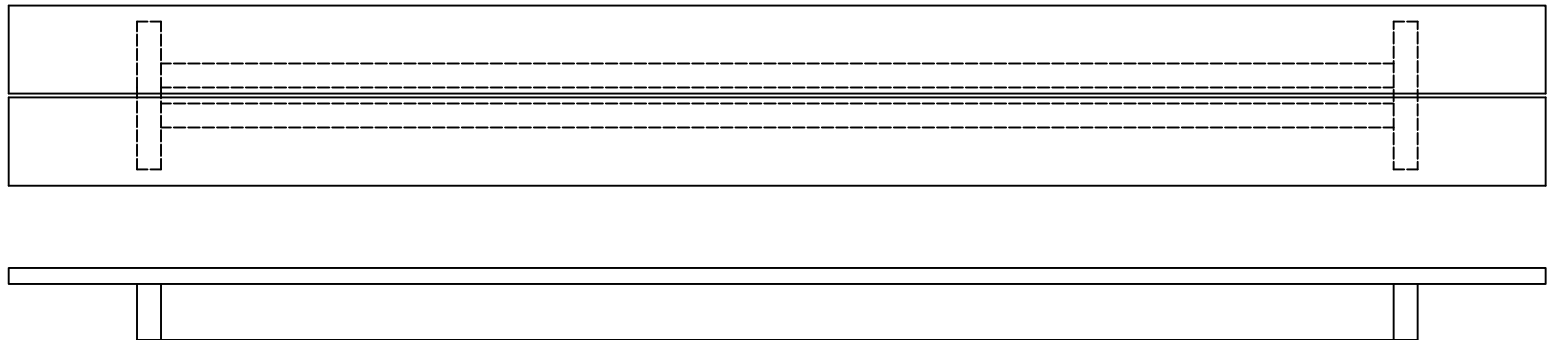
CONSTRUCT 2X4 SUPPORT FRAME

USE PIECE OF 5/4 BOARD AS A SPACER BETWEEN 2X4'S. THEN CENTER ASSEMBLY ON END  
PIECES #3 AND SCREW FROM ENDS USING LONGER SCREWS.



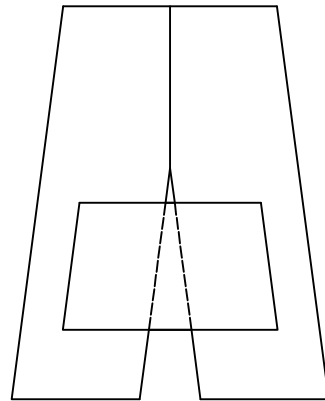
ATTACH TOP BOARDS TO SUPPORT

CENTER DECK BOARDS ON FRAME, LEAVING 1/4" GAP BETWEEN THEM FOR WATER TO DRAIN.  
SCREW DOWN TO FRAME WITH LONG SCREWS EVERY 2' AND TWO INTO END PIECE #3 THROUGH EACH BOARD



## CONSTRUCT LEG FRAME

MAKE SURE BOTTOM OF LEGS ARE IN LINE WITH EACH OTHER.  
PLACE LOWER BRACKET ON LEGS, 3" FROM BOTTOM OF LEGS.  
SCREW LOWER BRACKET TO EACH LEG WITH 4 SHORT SCREWS.



SCREW LEGS TO END OF UPPER FRAME, WITH TOPS FLUSH AGAINST TOP BOARDS AND THE BOTTOM BRACKET POINTING INWARDS SO THE TWO BOTTOM FRAMES ARE LOOKING AT EACH OTHER.

INSTALL DIAGONAL BRACKETS. TOP SHOULD SANDWICH BETWEEN 2X4 FRAME AND BE FLUSH AGAINST TOP BOARDS AND THE BOTTOM SHOULD BE FLUSH AGAINST BOTTOM BRACKETS. SCREW THROUGH BOTTOM BRACKET INTO DIAGONALS WITH 2, 2" SCREWS AND SCREW THROUGH THROUGH 2X4 AND THROUGH DIAGONAL WITH 3" SCREWS, 3 PER END.

PLEASE FEEL FREE TO CARVE OR BURN YOUR NAME OR FAVORITE BIBLE VERSE ONTO THE UNDERSIDE OF THE TOP BOARDS FOR PEOPLE TO FIND IN THE FUTURE.

THANK YOU SO MUCH FOR YOUR HELP TO CAMP CHO-YEH!